



## 4.5 CUBIC FOOT CHAMBER

### AN UNSURPASSED RH CONTROL OF $\pm 0.5\%$ .

The Parameter 4.5 cu. Ft. chamber features our unique humidity control system, which enables the user to attain unsurpassed levels of RH/temperature control and uniformity. Parameter's test chambers are designed to accurately produce the temperature and humidity conditions required for applications including stability studies, package testing, TAPPI, MIL-SPEC, and vapor transmission.

Applications for this unit include diverse industries, such as pharmaceutical development and manufacturing, electronic components, food, semiconductor, paper and pulp, and anywhere precise humidity control and temperature replications are required.

The interior chamber of the unit is constructed of a durable, corrosion resistant 304 stainless steel. Low watt density heaters are used that also contribute to the unit's longer life.

Depending on the application, the chamber airflow can be factory configured from the standard horizontal flow to a vertical flow. Other options include extended ranges, chart recorders, outer door window and a clear inner door with optional iris opening.

### Specifications

#### 7041-3110 SERIES (Domestic)

#### 7041-5110 SERIES (International)

Relative Humidity Range: 10 to 95%  
(limited by a 4° C dew point)

Relative Humidity Constancy:  $\pm 0.5\%$

Relative Humidity Uniformity:  $\pm 1.0\%$  at  
25°/60%

Temperature Range: 7 to 85°C

Temperature Constancy:  $\pm 0.2\%$

Temperature Uniformity:  $\pm 0.2\%$  at  
25°/60%

### UTILITIES

Domestic: 208/230V, 1-Phase, 60Hz, 11.6  
FLA, 7.6 RLA

International: 230V, 1-Phase, 50Hz, 11.4  
FLA, 7.2 RLA

Refrigeration Unit: Fractional HP utilizing  
non-ozone depleting gas

### EXTERNAL CHAMBER DIMENSIONS

41" w x 29" d x 46" h (nominal)

75" high with optional base cabinet

### INTERNAL CHAMBER DIMENSIONS

18" w x 18" d x 24" h (nominal)

### WEIGHT

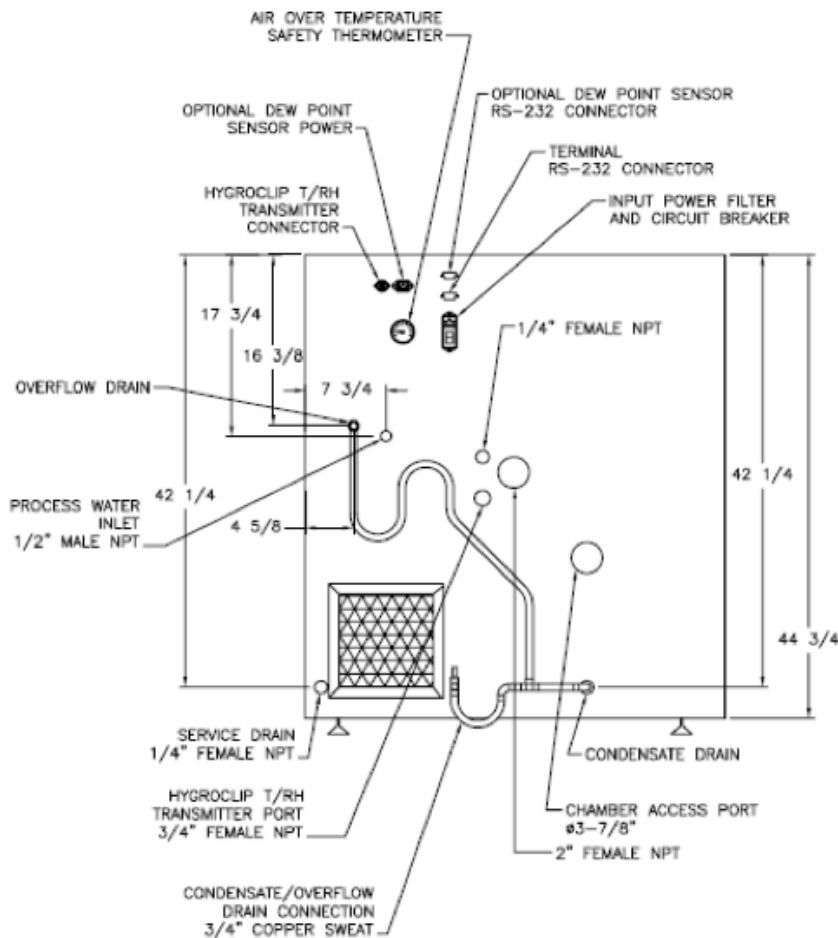
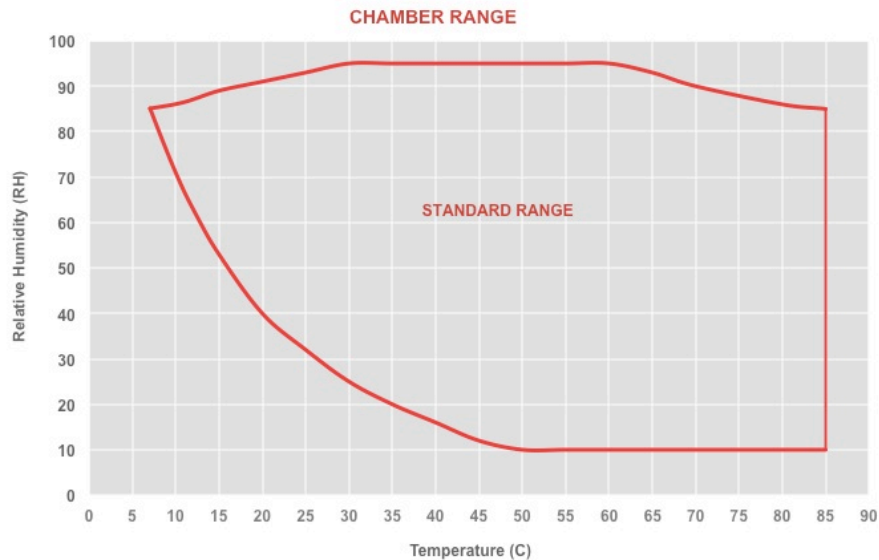
590 lbs.

### SHIPPING WEIGHT

725 lbs

RH VARIABLES	OURS	THEIRS
TOTAL	$\pm 2.5\%$	$\pm 6.0\%$
CONTROL CONSTANCY	$\pm 0.5\%$	$\pm 2.0\%$
CHAMBER UNIFORMITY	$\pm 1.0\%$	$\pm 2.0\%$
SENSOR ACCURACY	$\pm 1.0\%$	$\pm 2.0\%$

Extremely Precise Control  
Low Energy Requirements  
Low Maintenance



### Benefits

- Extremely stable and uniform environment
- Maintains superior constancy and uniformity
- Security and safety
- Equipment longevity; corrosion resistant
- Ease of operation

### Features

- RH control constancy of  $\pm 0.5\%$
- Temperature control constancy of  $\pm 0.2^\circ\text{C}$
- Multiple safety cut-offs
- 304 stainless interior chamber
- User-friendly and unit-specific digital controller

### The SmartPad

Parameter's SmartPad microprocessor controller is a user-friendly system that provides optimum accuracy and control. The SmartPad is equipped with direct readings in both temperature and humidity. It also features 60-segment programming for automatic cycling and ramping and soaking excursions. High-low or deviation alarms and digital communications ports are standard features.

**All Parameter equipment is exhaustively tested at your specified condition before being shipped to ensure trouble-free operation.**