

# THE NEWS

Pacific Science, LLC Quarterly Newsletter



## Welcome to 2026

As we begin 2026, we want to thank our customers for their continued trust and partnership. We are excited for the year ahead and the opportunity to support facilities with their cold storage equipment and service needs.

### Start the Year with Confidence in Laboratory Cold Storage

Early-year budgeting is the best time to assess:

- Aging or underperforming equipment
- Capacity limitations for growing programs
- LN<sub>2</sub> system infrastructure and VJ piping needs
- Equipment requiring IQ/OQ/PQ qualification and temperature mapping
- Preventative maintenance plans to increase efficiency, safety, and equipment reliability and longevity

### Planning Ahead Saves Time & Money

## CUSTOMER SUCCESS STORY:

### BIOREPOSITORY PLANNING & DESIGN

Pacific Science, LLC recently partnered with several biotechnology companies to **plan, design, and equip on-site master cell bank repositories**. The projects include:

- End-to-end project management
- Biorepository design and layout planning
- Cryogenic and cold storage system integration
- Engineering-led system design
- System and equipment validation compliant with cGMP standards
- The supply and installation of critical equipment to support long-term cell preservation.

Each project was design with reliability, safety, and preservation in mind. Components include emergency preparedness, business continuity, and regulatory compliance.

- Redundant cryogenic storage systems and backup LN<sub>2</sub>
- Design considerations aligned with regulatory and quality assurance requirements
- Scalable layouts to support future growth
- Service and preventative maintenance support

By managing the process from initial design through equipment installation, Pacific Science helps customers establish robust master cell bank environments tailored to their operational needs.

These master cell bank projects reflect years of experience supporting complex cryogenic storage programs and our commitment to protecting critical cell-based assets.

## BLOG

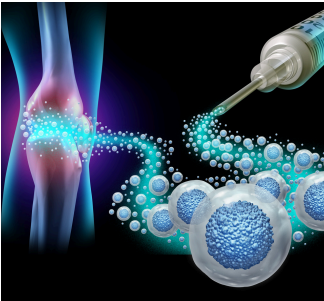


## The Importance of a Full-Service Cold Storage Partner for Your Lab

In today's life science and biotech landscape, laboratories and research organizations face constant pressure to safeguard critical materials. For facilities handling temperature-sensitive biologics a brief lapse in temperature can result in lost research, compromised therapies, or regulatory setbacks. That is where a full-service cold storage partner becomes vital.

[LEARN MORE](#)


## NEWS



## CIRM Approves Over \$160M to Support Preclinical and Clinical Research, Advances Education Opportunities, and Access to Clinical Trials

The California Institute for Regenerative Medicine (CIRM) governing board today approved funding of over \$160 million for 16 new research awards to develop therapies for a range of rare and common diseases; supported two new funding concepts to educate high school, undergraduate, and graduate students for careers in regenerative medicine; and supported a new strategy for how CIRM will put regenerative medicine therapies within reach of Californians.

[LEARN MORE](#)


### END-TO-END COLD STORAGE

#### One Partner. One Plan. Complete Confidence.

- Cold storage equipment sales and services
- LN<sub>2</sub> system design and LN<sub>2</sub> distribution systems (i.e. VJ piping installation)
- Equipment installation
- IQ/OQ/PQ qualification services
- Preventative maintenance and emergency support
- Cryogenic and ultra-low temperature freezer rentals

[Speak with a Cold Storage Specialist](#)

### PREVENTATIVE MAINTENANCE

#### Reducing Risk Before It Becomes an Emergency

- Detects issues before failures or temperature excursions occur
- Extends the lifespan of LN<sub>2</sub> and mechanical freezer systems
- Supports audit readiness and quality documentation
- Reduces unplanned downtime and emergency service costs

[Schedule Preventative Maintenance Service](#)

**Working with a full-service, single-source solutions provider simplifies planning, improves accountability, and reduces operational risk.**

Interested in learning more about how we can help with your master cell bank infrastructure and our end-to-end cold storage solutions?

[CONTACT US](#)


(833) 792-1910



[info@pacificscience.com](mailto:info@pacificscience.com)



[www.pacificscience.com](http://www.pacificscience.com)